

The Universe is Indestructible

Shovanlal Kundu and Krishnendu Das Gupta

Date of Submission: 12-08-2021

Date of acceptance: 27-08-2021

I. Introduction :

What is a Black Hole ?

A Black Hole is a region in space – time from which gravity prevents anything , including light , from escaping .The General Theory of Relativity predicts that a sufficiently compact mass will usually deform space – time to form a black Hole. Around a Black Hole there is a mathematically defined surface called the **Event Horizon** that marks the point of no return. The hole is called “ Black” because it absorbs all the light that hit the horizon , reflecting nothing, just like a black body, with a finite temperature !

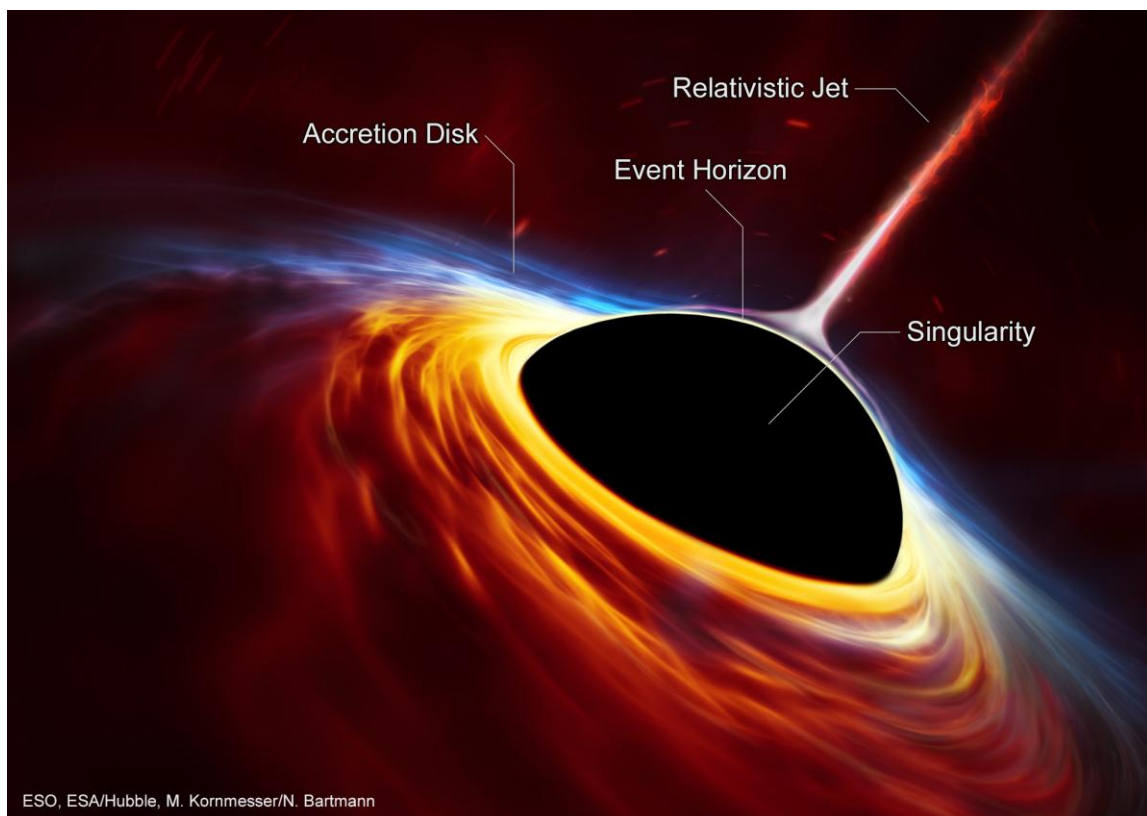


Fig (I)

The work that Roger Penrose and Stephen Hawking did between 1965 and 1970 showed that , according to general relativity, there must be a **Singularity** of infinite density where time becomes zero . This remarkable fact led Roger Penrose to propose the cosmic censorship hypothesis, which can be paraphrased as “God abhors a naked singularity”. In other words, the singularities where no law holds, occurs only in black holes.

An **Accretion Disk** is a structure (often a circumstellar disk) formed by diffuse material in orbital motion around a massive central body. The central body is typically a star or a black hole. Friction causes orbiting material in the disk to spiral inward towards the central body.

Relativistic jets (Through which our Pixel – Boats shall move!) are beams of ionized matter accelerated close to the speed of light. Most have been observationally associated with central black holes of some active galaxies , radio galaxies or quasars, and also by galactic stellar black holes, neutron stars or pulsars .These material may be from the accretion disk !

Theory Part I : As we know , with increase in mass in a black hole time slows down , and with infinite mass , $Y(\text{Relativistic Time}) = 0$, its easy to assume a simple but effective relation with mass and time , such as

$$M = \frac{K}{Y} , \text{ where } M = \text{relativistic mass of the black hole or a small mass such}$$

as a electron in kg

$Y = \text{relativistic time in secs}$

$K = \text{Kundu constant , in case of a electron} = 1.436 \times 10^{-13} \text{ kg} - \text{sec} .$

Its easy to see that if $M \rightarrow 0$, Time $Y \rightarrow \infty$

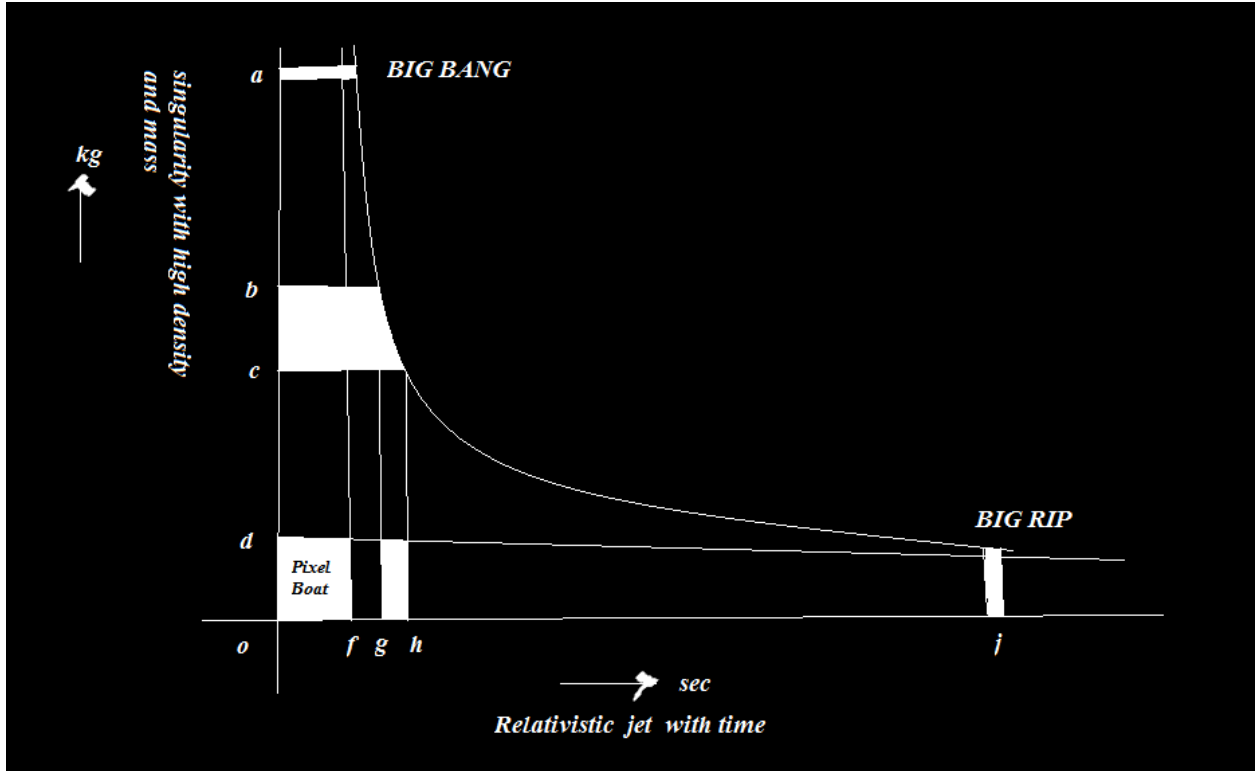


Fig (II)

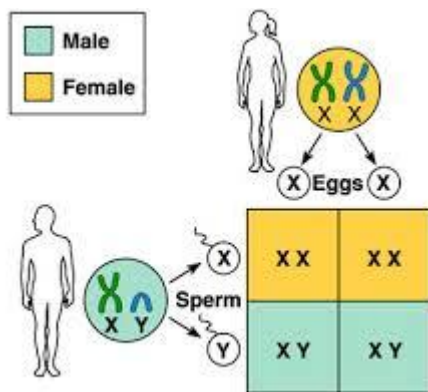
$a = 1.436 \times 10^{30} \text{kg}$, at $f = 10^{-43} \text{seconds}$ after big bang , the mass of a electron has crossed the Chandrasekhar's Limit , perhaps this may be one of the cause of big bang !When we decide to escape Dark Materialism, but not Knowledgeable Materialism in Pixel Boats (mass of a pixel of 32 bits is $1.3875 \times 10^{-24} \text{kg}$ represented by point dof).

Theory Part II : We here introduce the concept of ' Character Equations' (as because the world is created by y – photon , the solar rays reaching us) which are equations that we cannot differentiate (we have to take the whole , not ' black hole' ! which being part of the universe) ,in other words we should not digitize a character equation , thus writing ,

$$T (\text{ Feeling }) = \frac{X}{Y} \text{ is valid , where } X \text{ represents Relativistic love and } Y$$

Relativistic Time , and they are representative of Chromosome X and Y , either you take the whole of the X or don't take, similar for Y . Here we show a graphical representation of what we have understood of the above equation : $T (\text{ Feeling }) = \frac{X}{Y}$,

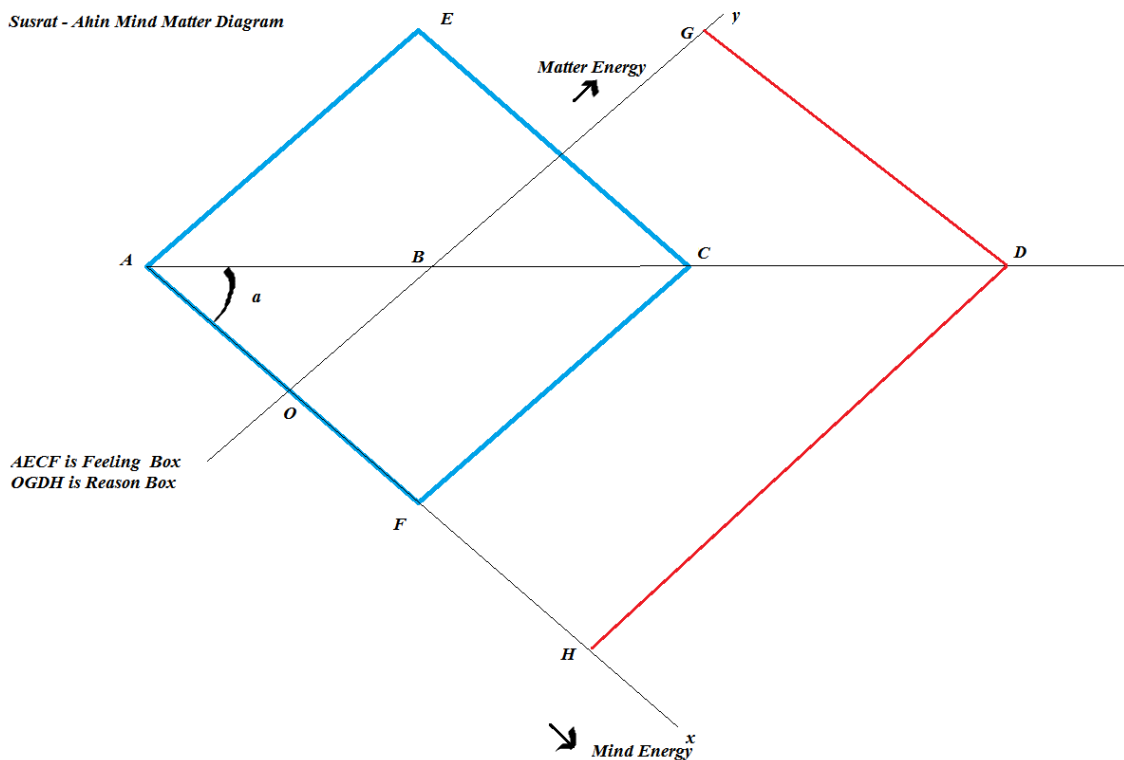
Our world is created by reflection of chit – jagat, in which T is eternal feelings where infinite love or wholesome love for sachitananda (the self, or the Brahman or Tao)is infinite too !



Ref : Toppr

Fig (III)

Susrat - Ahin Mind Matter Diagram



AEFC is Feeling Box
OGDH is Reason Box

Fig(IV)

∃: Atomic Scale

$$a = 80.9569^0$$

$$A = \left(-\frac{W_0}{2\pi}, 0\right), B = (0, W_0), C = \left(\zeta - \frac{W_0}{2\pi}, \mathcal{E}\right), D = \left(\zeta, \zeta + \frac{W_0}{2\pi}\right)$$

$$W_0 = 1 \text{ amu energy units} = 1.492 \times 10^{-19} \text{ Joules}$$

$$\mathcal{E} = 2\pi\zeta = \text{Ahin Energy or pure matter love energy}$$

$$\zeta = \text{Susrat energy} = 8.8665 \times 10^{-18} \text{ Joules ; ABCD is Susrat - Ahin Mind - Matter Line}$$

Whose equation is $X_{Ma} = 2\pi X_{Mi} + W_0$, where X_{Ma} = Relativistic Love - matter energy and X_{Mi} = Relativistic Love - Mind energy . If we divide the equation by Y we get $T_{Ma} = 2\pi T_{Mi} + T_0$.

If we measure Relativistic Love in Joules or energy units T or feeling is Joules per seconds .During the Covid LOCKDOWN our feeling tended towards zero as time seemed to tend towards infinity! $\left\{ T (\text{Feeling}) = \frac{X}{Y} \right\}$.

Time or Y seemed to have stopped and negative emotions like fear reigned everywhere!

II. Conclusion :

Since we have begun writing ' Character Equation ' we have to take the whole of X and whole of Y . Therefore we need to consider a system which we take as whole , namely : The Feeling Box and the Reason Box ! By

changing the Universal set \exists , we can Geographically think of love as energy to be spread ,beginning from our neighbors and neighborhood nations !

Author : Shovonlal Kundu

E-mail : shovonananda@gmail.com

CO-Author:-Krishnendu Das gupta

E- MAIL: krishnendu.dasgupta@yahoo.in